

# NEWS BOWL

The Newsletter of the Lane Cove Bowling and Recreation Club 151 Burns Bay Road Lane Cove West 2066  
Telephone: 94205793 Email: [info@lanecovebowls.com.au](mailto:info@lanecovebowls.com.au) Website: [www.lanecovebowls.com.au](http://www.lanecovebowls.com.au)

EDITION 316 – 10 MAY 2022



*Members  
Badge  
Draw*

*Wednesdays & Saturdays*

Drawn after the Raffle 4.30pm to 5pm. Jackpot rolls over to the next draw if winning member is not present at the club

\$

## MEMBER'S BADGE DRAW

The Member's Badge Draw has now reached **\$400**. All you have to do to win is be at the Club next Wednesday between 4.30 and 5.00 PM and for your name to be drawn as the winner

## THE LANE COVE BOWLO

THE PLACE TO BE ON FRIDAY FOR RAFFLE RAP

16 PRIZES MINIMUM – draw at 6.15pm

Meat trays, wine, gift cards, seafood vouchers and much more!



**CONSISTENCY SINGLES WRAP UP**

The Consistency Singles event is getting down to the serious side where there is all but one match to be played in the second round.

In the 1<sup>st</sup> quarter final Ole Hostrup will play the winner of the Ray Moran and Kevin Mulhall match.

John Lloyd will play Maureen Terrey in the 2<sup>nd</sup> quarter final.

Craig Marriott will face off against Kay Mulhall in the 3<sup>rd</sup> quarter final; and

Glenn Boardman will oppose Phil Wade in the 4<sup>th</sup> quarter final.

Last week **Maureen Terrey** accounted for **Stephen Shortis** in a close 2<sup>nd</sup> round match extending over 30 ends. Maureen squared the score after 6 ends and was never headed by a determined Stephen.

Statistics:

Player (Hcp)	Points scored	Deduct Handicap	Game Points	Ends won	Ends lost	Ends drawn
M Terrey (45)	159	5	154	13	11	6
S Shortis (50)	141		141	11	13	6

**Carole Boardman** had a good workout in her first Singles event before succumbing to **Craig Marriot**.

Statistics:

Player (Hcp)	Points scored	Deduct Handicap	Game Points	Ends won	Ends lost	Ends drawn
C Marriott (40)	150	10	140	16	1	6
C Boardman (50)	70		70	1	16	6

In what was possibly the best match of the tournament to date nascent recruit **Glenn Boardman**, in receipt of 45 points from **Rohan Marshall**, held on for a determined 5-point win.

Statistics:

Player (Hcp)	Points scored	Deduct Handicap	Game Points	Ends won	Ends lost	Ends drawn
G Boardman (50)	150		150	9	17	8
R Marshall (5)	190	45	145	17	9	8

“The use of video evidence is not always conclusive, but it sure beats the memory bank of most witnesses.” - Jack Gibson, Rugby League coach.

**BOWLING PROGRAMME NEXT WEEK**

<b>Date</b>	<b>Event</b>
15 May	Consistency Singles – Quarter finals

**BOWLING RESULTS**

Wednesday 4 May 2022

**Social**

John Bowring/Harry Fox, Craig Marriott & Rex Johnston 31 defeated Ole Hostrup, Andrew Gordon & Bevan Piper 14;  
Phil Wade/Chris Iszatt, David Erksine & Vic Solway 26 defeated Chris Iszatt, Stephen Shortis & Brian Jonson 12;  
Pat Biddell, Ron Aitken & Robert Patterson 28 defeated Jeanette Lloyd, Mark Burroughs & Marko Popovic 13; and  
David Lloyd, Stuart Smith & Mal Knight 17 defeated Steve Brouggy, Monica Smith & Simon Creedy 10.

Friday 6 May 2022

**Consistency Singles – Round 2**

Craig Marriott (Hcp 40) 140 defeated Carole Boardman (Hcp 50) 70

Saturday 7 May 2022

**Consistency Singles – Round 2**

Maureen Terrey (Hcp 45) 154 defeated Stephen Shortis (Hcp 50) 141

Glenn Boardman (Hcp 50) 150 defeated Rohan Marshall (Hcp 5) 145

**Social**

Robert Patterson/Len Hattersley, Bevan Piper & Sarah Hobson 18 defeated Graham Screen, Scott Bonthron & Robert Campbell 16;  
Brian Jonson, David Erskine & John Lloyd 31 defeated Chris Sinclair, Mal Knight & Peter Zucconi 15;  
Meredith Collum, Maureen Cosby & Rex Johnston 21 defeated Kathy Heezen, Ole Hostrup & Marilyn Screen 20;  
John Bowring & Stuart Smith 15 defeated Steve Brouggy & Ron Aitken 14; and  
Julie Smiles, Craig Marriott & Phil Wade 28 defeated Susan Walder, David Hillerman & Simon Creedy 16.

‘I have never tried to win friends on committees. You know you can never please them all, so don’t bother trying.’ – Jack Gibson

‘Rugby league must be a great game to survive the people who run it.’ – Jack Gibson  
again

**BIRTHDAYS:** "From our birthday, until we die, / Is but the winking of an eye." - William Butler Yeats



If you have a birthday this week you share it with Kerry Hemsley (10<sup>th</sup>), Pat Ford (11<sup>th</sup>), Reg Gasnier (12<sup>th</sup>), Wally Masur (13<sup>th</sup>), Hunter Poon (14<sup>th</sup>), Ken Wood (15<sup>th</sup>) and Brian Davies (16<sup>th</sup>).

## ON TELEVISION



Horse Racing – Scone Cup

Rugby League – Storm v Panthers

Rugby Union – Waratahs v Hurricanes

The Bowls Show - SBS 1.00pm



1. Into which sea does the Ross River flow?
2. How many sides does a trapezium have?
3. Which fictional masked hero was aided by Tonto?
4. What is measured in amperes?
5. Which Prime Minister turned down an AC (Companion of the Order of Australia) in 1997?

Answers: 1 Coral Sea. 2 Four. 3 The Lone Ranger. 4 Electric current. 5 Paul Keating.

**Riddle:** With my help, you can see through walls. What am I? (Answer page 9)



Find us on  
**Facebook**

## AUSSIE DESTINATIONS – Ashford, NSW

Quiet New England town with access to the beautiful Kwiambal National Park



Ashford is a tiny town which, largely as a result of changes in transportation, has been reduced to a general store, a pub, a bakery, a rural supplies store and a rural transaction centre (post office, credit union, tourist information). Many of the shops are closed and the Strand Theatre, once the centre of the village's social life, no longer operates. The appeal of the town lies in the beautiful Kwiambal National Park which lies to the north-west and has abundant wildlife, beautiful and peaceful rivers and a particularly beautiful waterfall which tumbles into a plunge pool.

Population: 635

Elevation: 500 m (1,640 ft)

### Location

Ashford, a small rural town, is 373 km south from Brisbane via Warwick, 628 km from Sydney via Thunderbolt's way and 669 km north of Sydney via the New England highway. It is 430 m above sea-level.

### Origin of Name

No one knows why the town was named Ashford. It was surveyed in 1851 and named Edgerton. Two years later a post office was established under the name of Frazer's Creek. Then in 1860 the village was officially named Ashford Frazer's Creek and finally, in 1863, the post office dropped Frazer's Creek and started to call itself Ashford.



### Kwiambal National Park

Kwiambal National Park is located north-west of Ashford with Lemon Tree Flat campground being 36 km north of the town. The park is located around the confluence of two major river systems, the Severn River and the Macintyre River. Kwiambal National Park conserves one of the largest remaining areas of native vegetation on the North West Slopes. The vegetation is typically open woodland with White Cypress Pine and Silver Leafed Ironbark and there is 200 hectares of rare dry rain forest. It is common, particularly in the early morning and late afternoon, to see grey kangaroos, wallaroos, platypus, swamp wallabies, red necked wallabies, koalas, emus and squirrel gliders in the park. Bird species in the area include black cockatoos, turquoise parrots, blue faced honeyeaters, white-winged choughs, square tailed kites and the tawny frogmouth.

### Limestone Caves

The Limestone Caves are located 28 km from Ashford and are readily accessible. The Ashford Caves occur on the northern edge of a limestone outcrop, which stretches for 10 kilometres along Limestone Creek. The area's limestone is Carboniferous in age (about 330 million years old) and was metamorphosed into marble by the heat and pressure generated when nearby volcanic and igneous rocks formed. Ashford Main



Cave has approximately 560 metres of horizontal passage, with two main entrances and a number of smaller openings. However, while relatively large in size, the cave only has a limited number of intact decorations because of past mining activity and dissolution by guano and bat urine. The rare Large Bent-wing Bat (*minioterus schreibersii*) uses

the caves as a nursery and roosting site. The Eastern Horse-shoe Bat also uses the caves. These bats are protected and consequently the caves are closed during their breeding season.

### **Macintyre Falls**

Located 36 km from Ashford on a road which combines dirt with sealed surfaces is the beautiful gorge where the Macintyre Falls and the pool below are the most striking features. There are bushwalking tracks down to the river - and the falls, although small, are visually striking as they tumble from a rocky outcrop through a series of steps to the deep rock plunge pool at the base.



### **Pindari Dam**

Pindari Dam is located 25 km south-east of town (turn south of Martyn Street onto Pindari Dam Road) The dam, located on the Severn River was completed in 1969.



## **History**

- \* In 1827 the explorer Allan Cunningham passed through the district on his way to the Darling Downs.
- \* By 1839 George Wyndham had settled 51,180 ha with one of the boundaries being only 5 km from where Ashford now stands.
- \* By 1843 a watch house was established at Ashford by the NSW Commissioner of Crown Lands.
- \* In 1848 surveyor J. J. Galloway passed through the area marking out possible town sites.
- \* By 1845 John Prefrement had established the Squatters Home Inn.
- \* In 1851 J. J. Galloway marked out the site of Ashford.
- \* A post office was established at Frazer's Creek in 1853.
- \* In 1860 the town was surveyed and land was offered for sale. 15 of the 32 lots were sold.
- \* In 1863 the local post office was renamed Ashford.
- \* A police station was established in the town in 1864.
- \* In 1865 Ashford's third hotel was opened. A lock up and court house were built.
- \* The bushranger, Captain Thunderbolt (Fred Ward) robbed Bonshaw's Hotel in 1867.
- \* The local public school was opened in 1868 with an enrolment of twenty.
- \* In 1872 the town was devastated by a serious flood.
- \* By 1891 the town had a population of 67.
- \* In 1898 a local sawmill opened to process locally cut cypress pine.
- \* In 1900 a public hall was built.
- \* 1902 saw the district devastated by drought with 20,000 sheep dying at Frazer Creek Station.
- \* In 1903 the Commercial Hotel, the largest building in the town, was opened for business. An expert advises local farmers on how to grow tobacco.
- \* A new Court House was built in 1904.
- \* In 1907 a public telephone was installed at the Post Office.
- \* 1911 sees a coal mine open in the district.
- \* The local Roman Catholic Church was consecrated in 1913.
- \* The Bank of New South Wales opened a branch in the town in 1919.
- \* In 1924 St Marks Church of England was dedicated by the Bishop of Armidale.
- \* By 1936 the town the Ashford Memorial Hall was built.
- \* By 1969 the Ashford district was producing more than \$1 million worth of tobacco each year and producing more than 450,000 kg. That year Pindari Dam was completed.
- \* In 1988 the coal mine closed.
- \* In 2000 Kwiambal National Park was officially gazetted.



## THE WAY WE WERE in the 1950s

Prior to the Chief Medical Officer's message connecting tobacco use to a variety of illnesses, the medical community did not consider smoking to be a bad habit. In fact, it was considered to soothe a worried person, suppress appetites, and generally be beneficial.



As absurd and counter-productive as it may seem, hospital patients could purchase packs from their hospital beds during this time. They could even use them in their hospital rooms if they wanted to!

A pack of cigarettes cost just 25 cents in the 1950s. Since 1965, the adult smoking rate for Australians has fallen from 42% to 10.7% in 2020-21.

**Riddle. A window**

## WHO CAN REMEMBER THESE JOBS?

**Town husband.** Better than waiting in line for Centrelink, a town husband was a person employed by the parish to collect money from the fathers of illegitimate children for their upkeep.

**Drover.** Uniquely Australian, a drover was person or team of people employed to drive livestock, “on the hoof” over long distances, and was immortalised in 19th century poems such as The Ballad of the Drover, paintings and the movie Australia. Droving became less and less common as trains were used to move livestock in the 1860s, almost completely disappearing after trucks began moving livestock in 1960s.



**Almoner.** An almoner was a chaplain or church officer in charge of distributing money collected by the parish to the deserving poor. The term originated around 1250-1300 and disappeared during the beginning of the 20th century with the advent of groups like the Salvation Army.

**Ice man/ice delivery.** Prior to electronic fridges, someone had to deliver the ice to keep refrigerated goods cool. In Europe, the ice was cut from frozen lakes at great risk to those involved. The first domestic fridge was invented in 1912, with commercial uptake becoming widespread in Australia from the 1950s, making the poor iceman superfluous to our needs.

**WORD OF THE WEEK: HIPPOCRAS** (noun): A medieval mulled wine flavoured with spices

**IDIOM OF THE WEEK:** "Out of whole cloth": entirely from fiction, imagination or fabrication

**QUOTE OF THE WEEK:** ‘No man has a good enough memory to be a successful liar.’ - Abraham Lincoln

**THOUGHT OF THE WEEK:** Focus where you make a difference. Akin to blocking out the noise, is the need to focus on where you can make a difference.

**A WIDE VIEW:** Don't overplay politicians' control over your destiny. Become informed, and then vote. Then move on.

**WICKED WORDS:** “Naughty John, Naughty John, does his work with his apron on. Cuts your throat and takes your bones, sells 'em off for a coupla stones.”  
— Libba Bray, *The Diviners*

**A NOVEL NOTE:** “People were always sorry. Sorry they had done what they had done, sorry they were doing what they were doing, sorry they were going to do; but they still did whatever it is.” *Against a Dark Background* by Ian M. Banks

**DID YOU KNOW:** Taiwan is one of the world leaders at screws? The hardware that is! In total, one-sixth of all the screws in the world are made in Taiwan. There are more than 50,000 different types of screws made in Taiwan. The hub of Taiwan's screw manufacturing is the Gangshan district of, Kaohsiung, where there is a cluster of more than 700 factories dedicated to manufacturing screws.

**FUN FACT:** 15,500 light bulbs are changed every year at the Sydney Opera House.

**SHE SAID IT:** “You can't get spoiled if you do your own ironing.” Meryl Streep

**HE SAID IT:** “The average woman would rather have beauty than brains, because the average man can see better than he can think. - Mark Twain

**JOKES OF THE WEEK:** An elderly couple was celebrating their 75th wedding anniversary. The old man leant forward and said softly to his wife: “Dear, there is something that I must ask you. It has always bothered me that our tenth child never quite looked like the rest of our children.



“Now I want to assure you that these 75 years have been the most wonderful experience I could have ever hoped for, and your answer cannot take that all that away. But I must know, did he have a different father?”

The wife dropped her head, unable to look her husband in the eye, she paused for a moment and then confessed. “Yes. Yes, he did.”

The old man was very shaken, the reality of what his wife was admitting hit him harder than he had expected.

With a tear in his eye, he asked: “Who? Who was he? Who was the father?”

Again, the old woman dropped her head, saying nothing at first as she tried to muster the courage to tell the truth to her husband. Then, finally, she said: “You, dear”.



Guy: I broke my arm in three places

Doctor: Well, don't go to those places



The new patient was airing his woes to an understanding doctor: “After the first, I'm tired, Doc. After the second, my chest aches and I start getting pains in my legs. After the third, I feel like fainting and it takes half-an-hour for my heart and respiration to return to normal.”

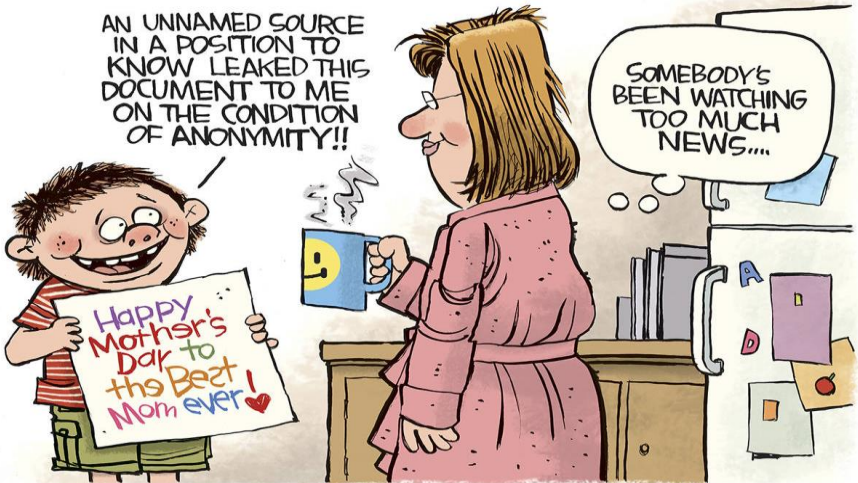
“Why don't you quit after the first?” inquired the doctor.

“How can I do that, Doc?” the patient asked. “I live on the third.”

# TICKLES CORNER



*"We used to be an investment club. Now we're a support group."*



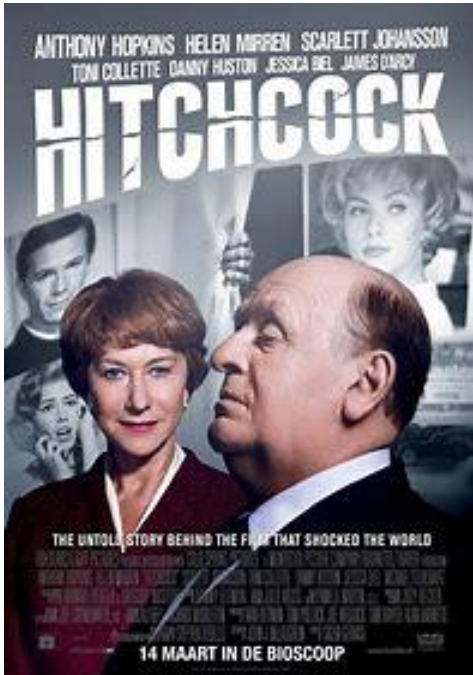
## BEST LINE



2012

HITCHCOCK

2012



The relationship between Alfred Hitchcock and his wife Alma Reville during the filming of Psycho (1960) in 1959 is explored.

In 1959, Sir Alfred Hitchcock (Sir Anthony Hopkins) and his wife, Alma Reville (Dame Helen Mirren), are at the top of their creative game as filmmakers amidst disquieting insinuations about it being time to retire. To recapture his youth's artistic daring, Sir Alfred decides his next movie will adapt the lurid horror novel, "Psycho", over everyone's misgivings. Unfortunately, as Sir Alfred self-finances and labours on this movie, Alma finally loses patience with his roving eye and controlling habits with his actresses. When an ambitious friend

lures her to collaborate on a work of their own, the resulting marital tension colours Sir Alfred's work, even as the novel's inspiration haunts his dreams.

**Alfred Hitchcock:** I will never find a Hitchcock blonde as beautiful as you.

**Alma Reville:** Oh, Hitch. I've waited thirty years to hear you say that.

**Alfred Hitchcock:** And that my dear, is why they call me the Master of Suspense.

**Cast:** Anthony Hopkins (Alfred Hitchcock) Helen Mirren (Alma Reville) Scarlett Johansson (Janet Leigh) Danny Huston (Whitfield Cook) Toni Collette (Peggy)



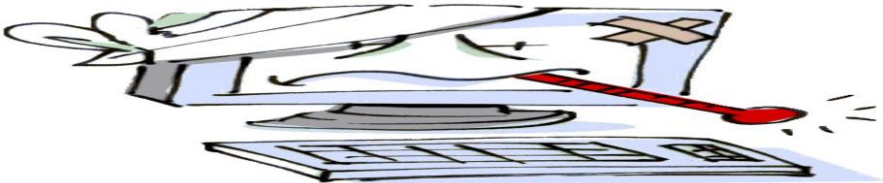
HUMMERSTON'S GOURMET MEATS



WHERE THE *locals* MATTER



## Tek Doctor



Is your PC or Mac sick?

Is your Internet/WiFi not working or slow?

Are you not sure how to use your iPad or iPhone?

Whatever the issue, we can help with Set-up, Problems or Training

Check out what we do and contact us for a no-obligation free quote at your Home or place of Business.

**WE CAN HELP! P: 0452 376100**

# RAFFLES EVERY FRIDAY

Tickets @ \$2 each on sale from 5.30 p.m.

Draw starts at 6.15 p.m.



**MEAT AND WINE**

**QUALITY MEAT TRAYS**

**BOTTLES OF WINE**

**SEAFOOD TRAY**

**PLUS**

**BONUS DRAW** FOR

**GOURMET MEAT TRAY**

BONUS - 1 draw for all tickets purchased in that night's raffle –the winner gets the gourmet meat tray.